







Factories	4
History	5
Capabilities	6
Quality Policy	7
PEKİNTAŞ	9
ALUFORM	21
SCHMID	35
APCON®	49
EPC Projects	63
Pre-engineered Steel Buildings	77
Prefabricated Panel Buildings	115
Prefabricated Units / Containers	133
Light Gauge Steel Buildings	155
Fully Welded Units	171
Modular Buildings	179
Converted Containerized Units	201

INDEX





Established in 1959
Özkan Olcay, Founder,
began contracting.



Pekintas Steel Wire
mesh & Pekintas
Foreign Trade was
founded.



Gold Star Award &
Certificate of
ISO 9001:2000 was
achieved.



Celebration of the 50th
anniversary of Pekintas
Group.



Established in 2015 for
Turnkey Projects.



Result of a long
and continuous
cooperation between
Aluform Pekintas A.Ş.
and Bruti-Ing as a joint
venture company for
production of sandwich
panels in Macedonia.



Pekintas Const.
increased its capacity
to produce specific,
heavy and prestressed
uhpc building
elements with its New
production facility in
Düzce-Türkiye.



The next generation
insulation panel of
NEW Aluform Platinum
is powered by Dow
Chemical's V PLUS
PERFORM (TM)
superior insulation
technology for
energy efficiency and
sustainability.

1959

1974

1993

1996

2000

2004

2009

2013

2015

2017

2018

2019

2020

Established in 1974
for the production of
prefabricated canals.



Established in 1996
for the production
of polyurethane and
mineral wool sandwich
panels sector.



Cold Starge Panel
Production was
established. Eurocold
brand was registered.
Quality Crown
certificate & QCK100
awards were received.



Established in 2013
as a joint venture
of Pekintas &
Schmid Groups for
the productions of
Photovoltaic (PV)
modules for Solar
sector.



Supplier and EPC
contractor APCON Co.
Inc. was established in
2017 for prefabricated,
pre-engineered,
containerized modular
and portable steel
buildings.



Investment in 2019.
Increasing capacity
of the production of
Photovoltaic (PV)
modules for Solar
sector to 250MW.



**Yearly Production**

10.000 ton structural steel
 5.000 ton wire mesh
 600.000 m²/year
 50.000 m³ precast concrete

Total Reference

10 Million m² buildings

85.000 m² open area
28.000 m² covered area

**Yearly Production**

5.000.000 m² sandwich panels
 6.000.000 m² sheets

Total Reference

100 Million m² panels & sheets

180.000 m² open area
32.000 m² covered area

**Yearly Production**

250 MW polycrystalline and
 monocrystalline solar modules

Total Reference

500 MW⁺ solar modules

35.000 m² open area
12.500 m² covered area

**Yearly Production**

250.000 m² pre-fabricated panel type buildings
 (office, dormitory, common buildings and etc.)
 50.000 m² containerized units
 (flat-packed, fully assembled, fully disassembled and etc.)
 200.000 m² pre-engineered steel buildings
 (hangar, warehouse, workshop and etc.)

Total Reference

3.5 million m² multifunctional buildings

20.000 m² open area
8.000 m² covered area

The mission of our company is “Quality” and our vision is “Guarantee of Tomorrow”. Therefore, with this philosophy, we take all the necessary measures to ensure that our products are produced in the best way and compatible with nature.

Our company carries out all its activities in accordance with ISO 9001 Quality Management System standards. In our laboratory, which equipped with high technology, all tests and experiments are carried out sensitively under the supervision of a class of occupational safety specialists.





Pekintas Pekin İnşaat was established in 1959, who become specialized company about prefabricated and prestressed industrial construction elements industry in the construction sector.

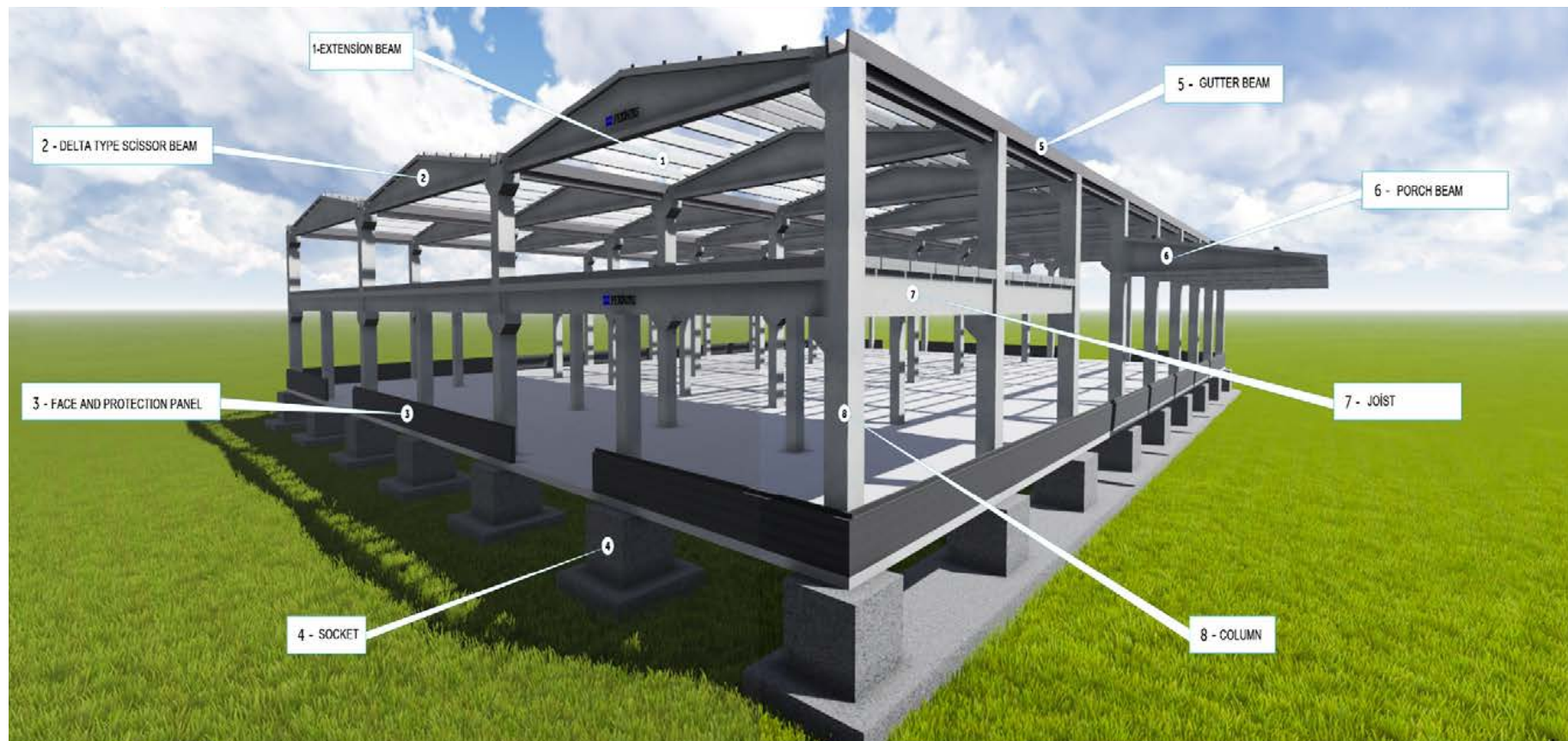
The head office of our company located in Mecidiyeköy, İstanbul and production facility is established in Düzce. Our annual production capacity is 800.000 m².

Pekintaş has continuously increased its product diversity, quality and market share and fulfills its social responsibilities without compromising its values since 1959.





PREFABRICATED CONCRETE BUILDING ELEMENTS





PRESTRESSED BRIDGE BEAMS

In the prestressed I section, high-strength concrete and prestressing technology are prefabricated reinforced concrete structural elements that are resistant to large openings.

Standart Types: I-75, I-90 ve I-120



STEEL MESH

Steel wire mesh is a high strength concrete steel produced by cold rolling of the coiled iron, ribbed by special methods and turned into steel.

The steel mats manufactured by this method are mainly used as the equipment of the vertical and horizontal reinforced concrete elements with large surfaces.



PANEL FENCE MESH

Panel fence mat, usually decorative or used for security purposes, produced in the form of a single panel hedge mat. The profile system allows application on different floors.

The panels are made of polyester with a special coating technology. Wire coating is made with galvanized paint.



STEEL C and Z PROFILE

Steel C and Z profiles which are needed in many points of prefabricated reinforced concrete and steel productions can be manufactured by our company in the first quality sheet metals and roll-form profile line, galvanized or black sheet metal, in desired length.

Profiles produced by Rollform method have more structural strength than those produced by other methods.



FERROLI / CLOSED AREA 35.000 m²



DÜZCE CAM / CLOSED AREA 75.000 m²



SARSILMAZ WEAPON INDUSTRY / CLOSED AREA 35.000 m²



UNILEVER VECTOR / CLOSED AREA 100.000 m²



SCHMID PEKINTAS / CLOSED AREA 12.500 m²



ODE / CLOSED AREA 30.000 m²



Aluform A.Ş., who is a member of Pekintaş Group, was established in 1996 as a Joint Venture investment with VAW-System Techick gmbH, who is an affiliated company of German industry giant VIAG group and Aluform runs under Turkish management since 1998. Our production of polyurethane and mineral wool sandwich panels is certified by the German TUV and SWISS TS with the ISO 9000:2000 system. Aluform has all major fire, hygiene and insulation certificates required in export markets and performs R&D activities for continuous improvements in these topics.



About ALUFORM

Aluform
Sandwich Panel





POLYURETHANE/ POLYISOCYANURATE PANELS

- 5 Rib Roof Panel
- 3 Rib Roof Panel
- Roof Panel With Membrane Coating
- Roof Panel With Kraft Paper Coating
- Secret Fix Wall Panel
- Wall Panel
- Flat Panel



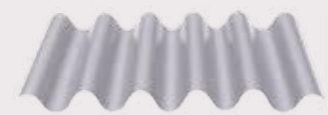
ROCKWOOL PANELS

- Double Lock System Roof Panel
- Secret Fix Wall Panel
- Perforated Double Lock System Roof Panel
- Secret Fix Wall Panel
- Perforated Secret Fix Wall Panel
- Standard Wall Panel
- Flat Panel



COLD STORAGE PANELS

- Cold Storage Panels Without Lock
- Cold Storage Panels With Lock



SINGLE SKIN PANELS

- Aluform 18/76
- Aluform 20/96
- Aluform 55/177
- Aluform 29/124
- Aluform 45/150
- Aluform 80/210

ROCKWOOL®
BRANDSIKKER ISOLERING



Hennecke
Polyurethane Technology





FOLKESTONE ASHGABAT / TÜRKMENİSTAN 75.000 m²



FERRARI WORLD / ABU-DHABI 280.000 m²



DOĞA LOJİSTİK KOCAELİ / TÜRKİYE 80.000 m²



ŞİŞECAM BURSA / TÜRKİYE 250.000 m²



ASRS KONYA / TÜRKİYE 50.000 m²



LCW YALOVA / TÜRKİYE 10.000 m²



BPLAS SAKARYA / TÜRKİYE 30.000 m²



KONVEYOR A.Ş. MANİSA / TÜRKİYE 35.000 m²



Schmid Pekintaş was founded in 2014 as the joint venture of Pekintaş & Schmid Groups for the production of Photovoltaic (PV) modules. Schmid Group is one of the forerunners of PV sector in the world as the producer of PV module and cell manufacturing machines with his PV module and cell manufacturing machines with his more than 150 years experience. Pekintaş Group is also one of the leader of Construction and Roof & Wall panel production in Türkiye with its 60 years experience. Schmid Pekintaş was founded with the merger of these two powerful leader groups in the sector.



About SCHMID PEKİNTAŞ



About SCHMID PEKİNTAŞ



Quality System Documents



Product Certificates



Agricultural Credit Certificates



TSE Product Certificates



TSE Service Qualification Certificate





POLYCRYSTALLINE (SPE 270 / 275)

- 270 Wp
- 275 Wp



MONOCRYSTALLINE (SPE 315 / 390)

- 315 Wp
- 320 Wp
- 325 Wp
- 380 Wp
- 385 Wp
- 390 Wp



UKRAINE / Storage System Power: 17,85 MWp



ZAYCHEVSKA, UKRAINE / Solar Power Plant: 10,3 MWp



KAPUTSYANE & TERNIVSKA, UKRAINE / Solar Power Plant: 11,8 MWp



SOLAR POWER PLANT, URFA, TÜRKİYE / Storage System Power: 32,20 MWp



ALUFORM PEKİNTAŞ, DÜZCE / TÜRKİYE

Module Type : SPE 250 W
Installed Power : 990 kWp
Storage System Power : 20 KWp-3800Ah

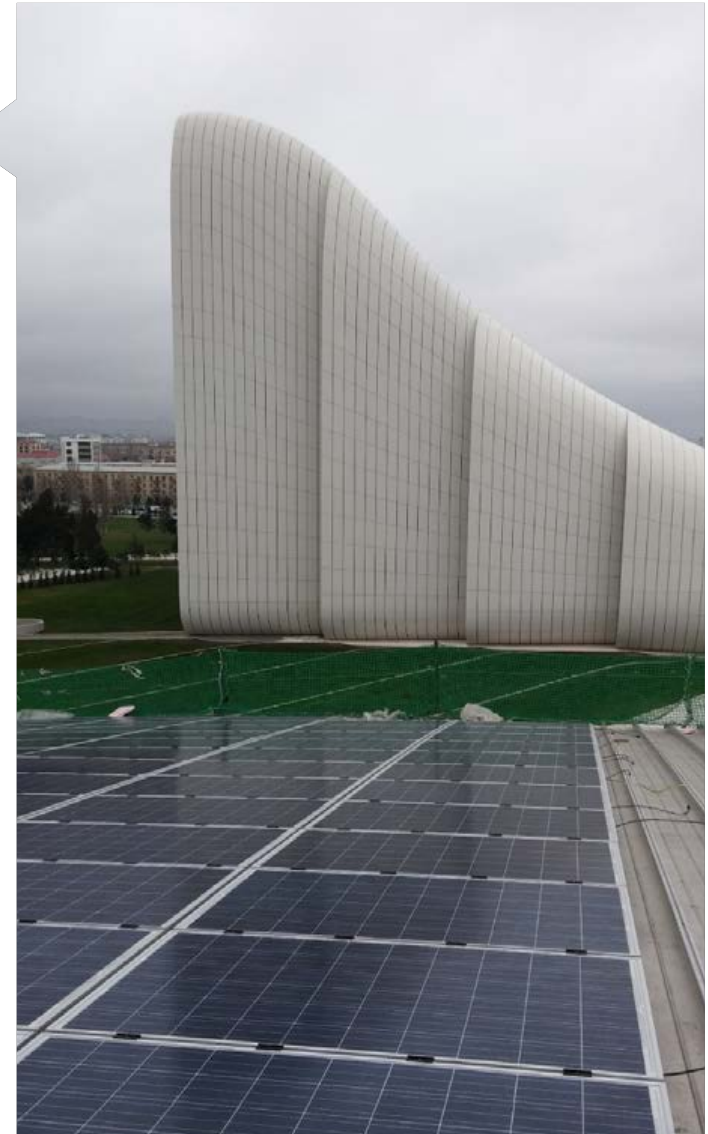




BAKÜ HAYDAR ALİYEV CONVENTION CENTER
BAKU AZERBAIJAN

Module Type : SPE 250 W

Installed Power : 236,5 kWp





ELSE ENERJİ - ŞİŞECAM PROJESİ, MERSİN / TÜRKİYE

Module Type : SPE 265 W



SOLAR POWER PLANT, ÇANKIRI, TÜRKİYE / Storage System Power: 7,00 MWp



**GÜNSU ELEKTRİK ÜRETİM SAN. TİC. A.Ş.
BURDUR / TÜRKİYE**

Module Type : SPE 250 W
Installed Power : 1,05 MWp



**TAY ELEKTRİK ÜRETİM SAN. TİC. A.Ş.
BURDUR / TÜRKİYE**

Module Type : SPE 250 W
Installed Power : 1,05 MWp



APCON® Building Systems serves on steel prefabrication industry with 40 years of expertise in prefabrication and under 60 years of history of Pekintaş Group. APCON® offers a full range of prefabricated, pre-engineered, containerized, modular and portable steel buildings across the three continents surrounding Türkiye and also to all over the world.

APCON® Building Systems's factory, which is one of the 4 production facilities of the group is located in Ankara, others are located in Düzce between Ankara and İstanbul, on the main industrial zone of Türkiye, having totally 320.000 m² open and 80.500 m² closed area, equipped with advanced technology, machinery and production processes.

We take a tremendous amount of care in designing the highest quality products and systems on turnkey basis; engineering each aspect from the design and the construction process, civil works, production, logistics, electrical and mechanicals, furnishings & equipment to final installation and handover with economic, quick and safe building processes.







Certificate

The certification body of Swiss Safety Center AG hereby confirms that the company

APCON İNŞAAT YAPI SANAYİ VE TİCARET A.Ş.
FULYA MAHALLESİ BÜYÜKDERE CAD. NO: 32 PEKİNTAŞ PLAZA MECİDİYEKÖY
TR – 34388 ŞİŞLİ, İSTANBUL

Subsidiaries:
GAZİOSMANPAŞA MAH. KIRILANGİÇ CAD. MALIKÖY MAH. ANADOLU ORGANİZE SANAYİ BÖLGESİ 9. CADDE NO: 3 TR – 06700 ÇANKAYA, ANKARA

for the scope

Design, manufacture and installation of steel construction, prefabricated building, container and modular systems

successfully applies an environmental management system according to

ISO 14001:2015

Registration number: 18-353-802
Initial certification: 09.01.2018
Recertification: 12.03.2021
Valid from: 09.01.2021
Valid until: 08.01.2024

Heinrich A. Bieler
Head of the certification body
Wallisellen, 16.03.2021
Swiss Safety Center AG, Certifications
Richtstrasse 15, CH-8200 Wallisellen
A company of the SVT Group, member of IAF

Certificate

The certification body of Swiss Safety Center AG hereby confirms that the company

APCON İNŞAAT YAPI SANAYİ VE TİCARET A.Ş.
FULYA MAHALLESİ BÜYÜKDERE CAD. NO: 32 PEKİNTAŞ PLAZA MECİDİYEKÖY
TR – 34388 ŞİŞLİ, İSTANBUL

Subsidiaries:
GAZİOSMANPAŞA MAH. KIRILANGİÇ CAD. MALIKÖY MAH. ANADOLU ORGANİZE SANAYİ BÖLGESİ 9. CADDE NO: 3 TR – 06700 ÇANKAYA, ANKARA

for the scope

Design, manufacture and installation of steel construction, prefabricated building, container and modular systems

successfully applies a management system for occupational health and safety according to

ISO 45001:2018

Registration number: 18-353-802
Initial certification: 09.01.2018
Recertification: 12.03.2021
Valid from: 09.01.2021
Valid until: 08.01.2024

Heinrich A. Bieler
Head of the certification body
Wallisellen, 16.03.2021
Swiss Safety Center AG, Certifications
Richtstrasse 15, CH-8200 Wallisellen
A company of the SVT Group, member of IAF

Certificate

The certification body of Swiss Safety Center AG hereby confirms that the company

APCON İNŞAAT YAPI SANAYİ VE TİCARET A.Ş.
FULYA MAHALLESİ BÜYÜKDERE CAD. NO: 32 PEKİNTAŞ PLAZA MECİDİYEKÖY
TR – 34388 ŞİŞLİ, İSTANBUL

Subsidiaries:
GAZİOSMANPAŞA MAH. KIRILANGİÇ CAD. MALIKÖY MAH. ANADOLU ORGANİZE SANAYİ BÖLGESİ 9. CADDE NO: 3 TR – 06700 ÇANKAYA, ANKARA

for the scope

Design, manufacture and installation of steel construction, prefabricated building, container and modular systems

successfully applies a quality management system according to

ISO 9001:2015

Registration number: 18-353-804
Initial certification: 09.01.2018
Recertification: 12.03.2021
Valid from: 09.01.2021
Valid until: 08.01.2024

Heinrich A. Bieler
Head of the certification body
Wallisellen, 16.03.2021
Swiss Safety Center AG, Certifications
Richtstrasse 15, CH-8200 Wallisellen
A company of the SVT Group, member of IAF

CERTIFICATE

of conformity

in accordance with Regulation (EU) 2017/1321 of the European Parliament and of the Council of 19 March 2017 (the Construction Products Regulation or CPR), the certificate applies to the construction product

Conformity for Steel Structures

Normative Standard	Essential characteristics	Declaration method
EN 1090-1:2009+A1:2017	Essential characteristics of steel structures	EN 1090-1:2009+A1:2017

issued for the

APCON İNŞAAT YAPI SANAYİ VE TİCARET ANONİM ŞİRKETİ
Kurtuluş Sokak 342 Kat: 3 GOF Çankaya / ANKARA / TÜRKİYE

and evaluated in the manufacturing plant

APCON İNŞAAT YAPI SANAYİ VE TİCARET ANONİM ŞİRKETİ
Anadolu Organize Sanayi 9. Cadde No:3 Maltepe Sektörü / ANKARA / TÜRKİYE

This certificate attests that all provisions concerning the assessment and verification of conformity of performance described in clause 6 of the assessment are

EN 1090-1:2009+A1:2017

under system (C) are applied and that

the factory production control fulfills all the prescribed requirements and also above.

The certificate was first issued on 04.07.2018 and will remain valid as long as the test methods and the factory production control requirements included in the assessment standard, used to assess the conformity of the declared characteristics, do not change with the method, and the manufacturing conditions in the plant are not significantly different. The next surveillance is due at 09.07.2021.

Issued on: 08.08.2022

by TÜV AUSTRIA SERVICES GMBH
Technikerstrasse 10
A-1220 Wien

WELDING CERTIFICATE

Certificate No.: 0408-CPR-TAG3193

Manufacturer:

APCON İNŞAAT YAPI SANAYİ VE TİCARET ANONİM ŞİRKETİ
Kurtuluş Sokak 342 Kat: 3 GOF Çankaya / ANKARA / TÜRKİYE

Product:

APCON İNŞAAT YAPI SANAYİ VE TİCARET ANONİM ŞİRKETİ
Anadolu Organize Sanayi 9. Cadde No:3 Maltepe Sektörü / ANKARA / TÜRKİYE

Standard:

EN 1090-1:2009+A1:2017
EN 1090-2:2019
EN 1090-3:2019

Executive Director:

120 - Metal-Roll-on Steel Rolling
111 - Reverse Metal-on-Metal

Welding Process:

Group 1: 1.1 and 1.2 according to EN ISO 5817:2018 and EN ISO 5817:2018, Table 4 and 5
Group 2: 1.1 according to EN ISO 5817:2018 and EN ISO 5817:2018, Table 4

Responsible Welding Coordinator:

Group 1: 1.1 and 1.2 according to EN ISO 5817:2018 and EN ISO 5817:2018, Table 4 and 5
Group 2: 1.1 according to EN ISO 5817:2018 and EN ISO 5817:2018, Table 4

Examiner:

1.1 and 1.2 according to EN ISO 5817:2018 and EN ISO 5817:2018, Table 4 and 5
1.1 and 1.2 according to EN ISO 5817:2018 and EN ISO 5817:2018, Table 4 and 5

Examination:

1.1 and 1.2 according to EN ISO 5817:2018 and EN ISO 5817:2018, Table 4 and 5
1.1 and 1.2 according to EN ISO 5817:2018 and EN ISO 5817:2018, Table 4 and 5

Remarks:

1.1 and 1.2 according to EN ISO 5817:2018 and EN ISO 5817:2018, Table 4 and 5
1.1 and 1.2 according to EN ISO 5817:2018 and EN ISO 5817:2018, Table 4 and 5

Valid from:

04.07.2018 to the next audit

Next Surveillance:

09.07.2021

Issued on: 08.08.2022

by TÜV AUSTRIA SERVICES GMBH
Technikerstrasse 10
A-1220 Wien

CERTIFICATE

The certification body of TÜV AUSTRIA SERVICES GmbH certifies that

APCON İNŞAAT YAPI SANAYİ VE TİCARET ANONİM ŞİRKETİ
Kurtuluş Sokak 342 Kat: 3 GOF Çankaya / ANKARA / TÜRKİYE

Factory:

Anadolu Organize Sanayi 9. Cadde No:3 Maltepe Sektörü / ANKARA / TÜRKİYE

has met all necessary quality requirements for welding, according to

EN ISO 3834-2

for the following products or services ranges

Steel, Design, Manufacture and Montage of Accommodation Container Prefabricated Steel Building, Steel Storage, Shelters, Steel Storage Containers, Steel Bump and Grate, Steel Ingotment

Date of audit:

08.07.2022

Date of expiry:

03.07.2023

Certificate No.: H2-03194-23-TR-OSV

Under the scope of the assessment, the certificate is valid as long as the certificate is not withdrawn or the certificate is not withdrawn.

Issued on: 08.08.2022

by TÜV AUSTRIA SERVICES GMBH
Technikerstrasse 10
A-1220 Wien

ZERO WASTE CERTIFICATE

(Basic Level)

Document Number: TS/6/C/20/63 Date: 2012/2021

Company Name: APCON İNŞAAT YAPI SAN. VE TİC. A.Ş. - ANKARA SUBESİ
ANKARA MALIKÖY ANADOLU OSB Mahallesi, ANADOLU OSB 9 CADDE, No: 3, Adres: SİNCAN, Türkiye
Tax Number: 271465652

It has been awarded the Zero Waste Certificate by establishing the Zero Waste Management System according to the Zero Waste Regulation published in the Official Gazette dated 12/07/2019 and numbered 30620.

Türkmen HACİHALLOĞLU
Environment, Urbanism and Climate Change
Deputy Provincial Director

Document Expiry Date: 2012/2026

E-İMZA LİDİR

TURNKEY CONSTRUCTION SERVICES

DESIGN & ENGINEERING



CIVIL WORKS & INFRASTRUCTURE



MEP WORKS



FURNITURE & EQUIPMENT



UTILITIES



SITE ASSEMBLY & COMMISSIONING WORKS



➤ Containerized Units



➤ Prefabricated Panel Type Buildings



➤ Pre-engineered Steel Buildings



➤ Modular Buildings



➤ Fully Welded Containerized Units



➤ Blast Proof & Ballistic Resistant Units



➤ Rig Camps & Trailer Mounted Containers



➤ Off-shore & Gas Tight Units



➤ Substation & Electrical Control Rooms



➤ Emergency Refuge Chambers



➤ Lightweight Steel Frame Buildings



➤ Structural Steel



➤ Furniture & Equipment





An aerial photograph of a construction site, overlaid with a semi-transparent red filter. The site features several long, low-profile buildings with corrugated metal roofs. In the foreground, there are large stacks of materials, including what appears to be rebar or steel beams, and a large pile of sand or gravel. The overall scene suggests a large-scale infrastructure project.

EPC PROJECTS

➤ South Yoloten Development Project / Industrial Base - Yoloten, Turkmenistan









➤ Satellite Camp Facilities at Umm Qasr & Ar Ratawi - Basra, Iraq





➤ Industrial Base - Erbil, Iraq





➤ Truck Maintenance Hangar & Office Building - Adana, Türkiye





➤ Kitchen and Mess Hall - Adana, Türkiye









PRE-ENGINEERED STEEL BUILDINGS

➤ Residential Building - Malabo, Equatorial Guinea





➤ Bottling Plant - Baku, Azerbaijan





➤ Automotive Showroom - Ankara, Türkiye





➤ Tile Production Plant - Russia





➤ Textile Factory - Kaachka, Turkmenistan





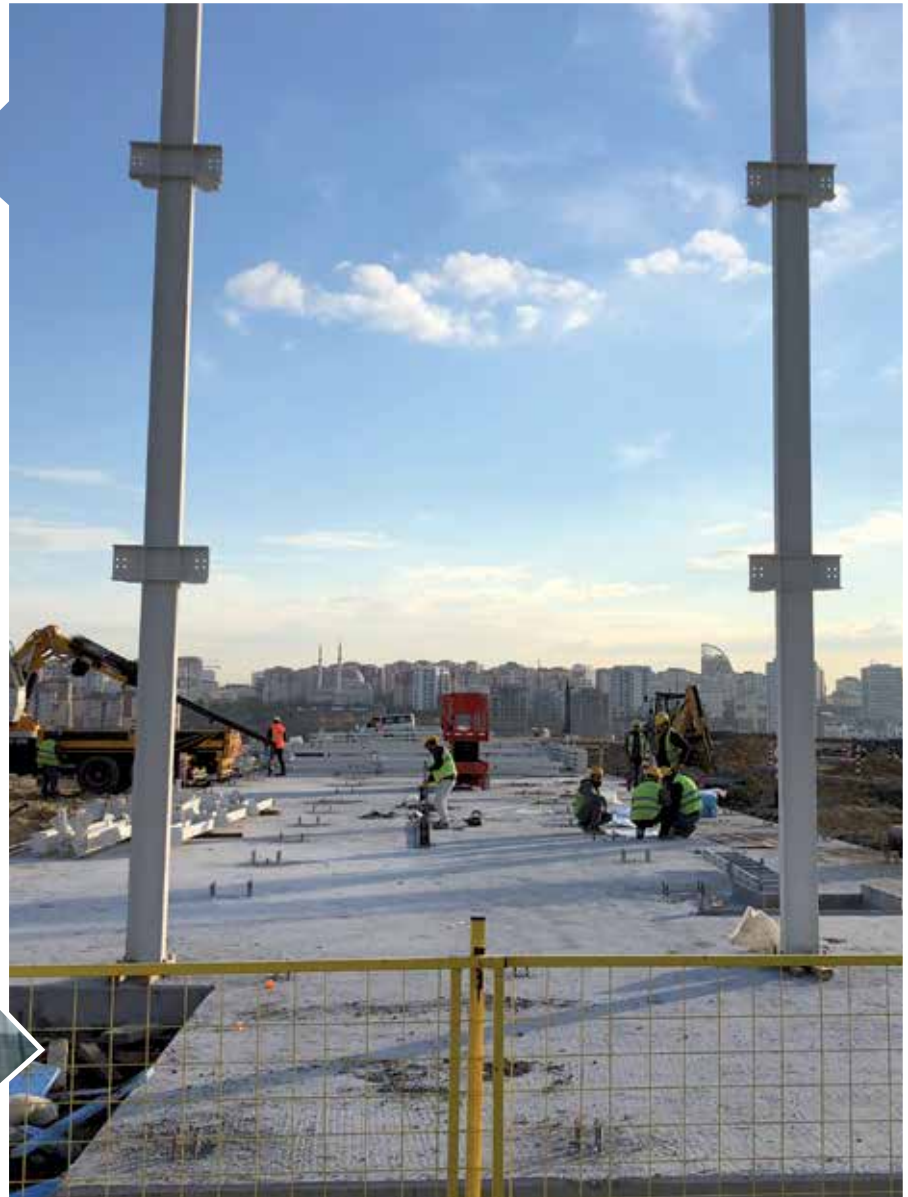
➤ Bottling Plant - Galati, Romania





➤ Ikitelli Integrated Hospital Project, Labor & Staff Mess-Hall Buildings - Istanbul, Türkiye





➤ Baku Shipyard Project - Baku, Azerbaijan





➤ Evyapport Offices - Izmit, Türkiye





- Middle East Technical University Technopark, Office Complex Ankara, Türkiye





➤ Aircraft Hangar, Flight Crew, Service Building and Office Facilities Basra, Iraq





➤ Aircraft Hangar - Bodrum, Türkiye



➤ Aircraft Hangar - Kandahar, Afghanistan



➤ İkitelli Integrated Hospital Project, Office Building - İstanbul, Türkiye





- İkitelli Integrated Hospital Project, Labor Accommodation Buildings - İstanbul, Türkiye





► Accommodation Building - Adana, Türkiye



➤ Middle East Technical University, Dormitory Complex - Güzelyurt, Cyprus







➤ Overhead Covering System - Baghdad, Iraq



➤ OZ2 Pipeline, Pump Station Building - Haoud El Hamra, Algeria



➤ Truck Maintenance Hangar - Jeddah, Saudi Arabia







A photograph of a prefabricated panel building's exterior, featuring a complex steel truss system and window frames. The entire image is overlaid with a solid red color. The text "PREFABRICATED PANEL BUILDINGS" is centered in white, bold, uppercase letters.

PREFABRICATED PANEL BUILDINGS

➤ İkitelli Integrated Hospital Project Accomodation Building - İstanbul





- Gold Mine - Workshop Building, Laboratory Building and Office Complex Project - Balıkesir, Türkiye



➤ Office Building Project - Mersin, Türkiye



➤ Mobilization Camp Project, Uganda





- Sangachal Onshore Terminal Main Construction Works Project, Site Camp Baku, Azerbaijan





➤ BTC Pipeline Project, Site Camp - Adana, Türkiye





➤ Security Camp Buildings - Georgia





➤ Military Housing Project, Site Camp - Vladykawkas, Russian



➤ Natural Gas Power Project, Site Camp - Adapazarı, Türkiye



➤ Birecik Dam and Hepp Project, Site Camp - Şanlıurfa, Türkiye



➤ 100 Men Drilling Camp - Pitesti, Romania





A photograph of a prefabricated unit, possibly a container or a small building, with a red overlay. The unit has several windows with horizontal blinds. The text "PREFABRICATED UNITS / CONTAINERS" is overlaid in white, bold, sans-serif font.

PREFABRICATED UNITS / CONTAINERS

➤ Accommodation Units - Yoloten, Turkmenistan









➤ Iraq Energy City, 20 Room Accommodation Building - Basra, Iraq





➤ Accommodation Units - Syria



➤ Construction Site Office Complex - Brussels, Belgium



➤ Mess Hall, Dressing and Handwash Units - Kocaeli, Türkiye



➤ Fusion Container Project - Osnabrück, Germany



➤ Mobilization Camp - Ukraine





➤ Handicap Living Container - England





➤ Office Container Project - Freiburg, Germany





➤ Office Building - Ankara, Türkiye



➤ Site Camp - Hassi Berkine, Algeria



➤ Office Units - Adana, Türkiye









LIGHT GAUGE STEEL BUILDINGS

➤ Hotel Facilities, Residential Building - Alanya, Türkiye





➤ Clinic Building - Adana, Türkiye





➤ Office Complex - Ankara, Türkiye





➤ System Control Building - Adana, Türkiye



➤ Kindergarten Project - İstanbul, Türkiye











➤ Mobilization & Warehouse Buildings - Azerbaijan









FULLY WELDED UNITS

➤ Trailer Mounted Mobile Units - Al Khobar, KSA





➤ 150 Men Camp - Georgia



FULLY WELDED UNITS

Projects



➤ 350 Men Security Camp - Basra, Iraq







A photograph of a modern modular building with a glass-enclosed walkway, overlaid with a solid red color. The building features horizontal siding and large windows. The text "MODULAR BUILDINGS" is centered in white, bold, sans-serif font.

MODULAR BUILDINGS







➤ Regional Office - Basra, Iraq



➤ Cardiology Hospital - Penza, Russia





➤ Traumatology Hospital - Smolensk, Russia









➤ New York University, Interim Facility - Abu Dhabi, UAE









➤ CCU & ICU Hospital Project - Mosul, Iraq





➤ Apartment Buildings - Stuttgart, Germany





➤ Modular Villa Project - Neudenu, Germany







The background image shows a row of white metal shipping containers. One container in the center has its double doors open, revealing a dark interior with some structural elements. The entire image is overlaid with a semi-transparent red filter. The text 'CONVERTED CONTAINERIZED UNITS' is centered in white, bold, sans-serif capital letters.

CONVERTED CONTAINERIZED UNITS

➤ Water Treatment Unit - Mosul, Iraq





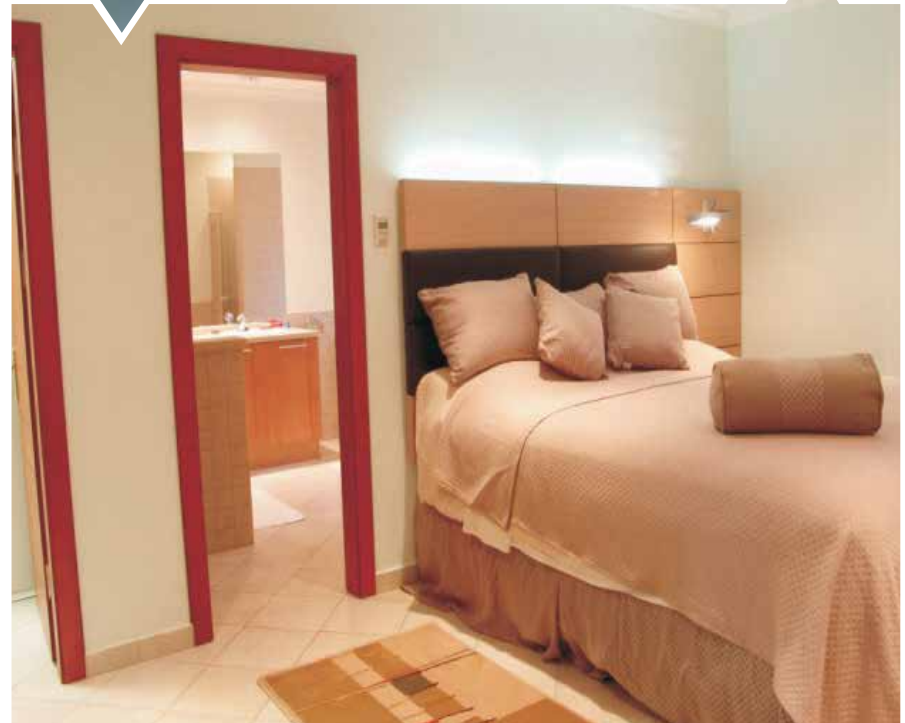
➤ Converted ISO Container Project - Africa



CONVERTED CONTAINERIZED UNITS

Projects





FURNITURE & EQUIPMENT







APCON Office

Kırlangıç Sokak No: 24/2 (-2. Floor) GOP
Çankaya, ANKARA / TÜRKİYE
T: +90 312 286 02 58
F: +90 312 286 82 58

APCON Factory

Anadolu Organize Sanayi 9. Cadde No: 3 Malıköy
Temelli, Sincan, ANKARA / TÜRKİYE
T: +90 312 502 95 08
F: +90 312 557 16 11

Factory

Büyükdere Caddesi No: 32 Pekintaş Plaza 34388
Mecidiyeköy, İSTANBUL / TÜRKİYE
T: +90 212 212 02 22
F: +90 212 288 60 44